

Anti-IGF-1R hlgG1 Antibody(teprotumumab)

Product information

| | |
|-----------------|--------|
| GM-87441AB-10 | 10 µg |
| GM-87441AB-100 | 100 µg |
| GM-87441AB-1000 | 1 mg |

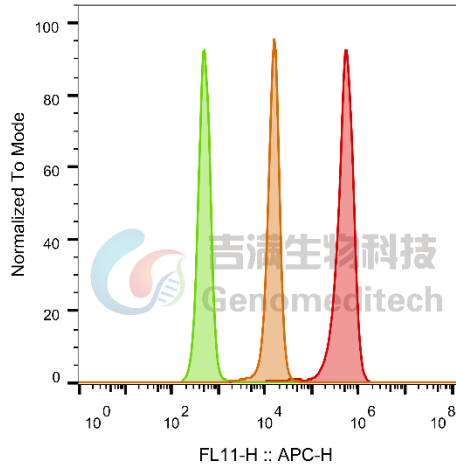
Antibody Information

| | |
|--------------------|--|
| Species Reactivity | Human; |
| Clone | teprotumumab |
| Source/Isotype | Monoclonal human IgG1, κ |
| Application | Flow cytometry |
| Specificity | Detects IGF-1R |
| Gene | IGF-1R |
| Other Names | A330103N21Rik, CD221, D930020L01, IGF-1R, hyft |
| Gene ID | 16001 (human) |
| Background | IGF-1R is an important cell surface receptor that plays a key role in regulating cell growth, proliferation, and survival. Abnormal expression or activation of IGF-1R is closely associated with the occurrence and development of various diseases, including tumors, diabetes, and neurodegenerative diseases. In general, research on IGF-1R is of significant importance in gaining a deeper understanding of cell signaling pathway regulation, the mechanisms of disease occurrence and development, and potential therapeutic targets. |
| Storage | Store at 2-8°C short term (1-2 weeks).Store at ≤ -20°C long term. Avoid repeated freeze-thaw. |
| Formulation | Phosphate-buffered solution, pH 7.2. |
| Endotoxin | < 1 EU/mg, determined by LAL gel clotting assay |

Data Examples

Flow cytometry

H_IGF-1R HEK-293 Cell Line (Catalog # GM-C36550) was stained with Anti-IGF-1R hlgG1 Antibody(teprotumumab) (Catalog # GM-87441AB) or isotype control antibody, followed by anti-Human IgG APC-conjugated Secondary Antibody.



| SampleID | Geometric Mean : FL11-H |
|------------------------------------|-------------------------|
| HEK-293 anti-IGF1R+APC-2nd | 14811 |
| HEK-293 H_IGF1R H_IgG+APC-2nd Ab | 522 |
| HEK-293 H_IGF1R anti-IGF1R+APC-2nd | 4.73E5 |

Fig. FACS